

# MAHLE

*Driven by performance*

# TECHNOLOGY FULL SPEED AHEAD

## TechPRO® Diagnostic Scan Tool

**Analyze, Diagnose, and  
Repair Today's Vehicles Faster**



### **SPEED.**

Decode a VIN in seconds with 1 click. Communicates with all modules and reports all DTC's in 20-30 seconds on average.

### **COST.**

Subscription-based model vs. large initial investment.

### **FUNCTIONALITY.**

Use with existing tablet, laptop, or desktop with no need to purchase additional hardware. TechPRO® Diagnostic Scan Tool can be purchased with the option of a tablet bundle.

### **DATA.**

Real-time streaming data, with software updates downloaded rapidly from the Internet.

### **RESOURCE.**

History is collected on every component of the analysis with instant pass-thru to repair data for subscribers of Identifix, Mitchell 1, iATN and more...

### **TECH-FRIENDLY.**

Bright LED light confirms that VCI is communicating and audible alarm reminds technicians to disconnect.

Free software demo at [www.mahletechpro.com](http://www.mahletechpro.com)  
[www.servicesolutions.mahle.com](http://www.servicesolutions.mahle.com)

# TechPRO®





# Adding Value to Your Shop's Bottom Line

## FAST DIAGNOSIS.

Measured in seconds vs. minutes for competitors' tools, TechPRO® Diagnostic Software can often save 5-10 minutes or more per accurate diagnosis and repair, increasing productivity and generating thousands of dollars more revenue per year.

## FAST RESOURCES.

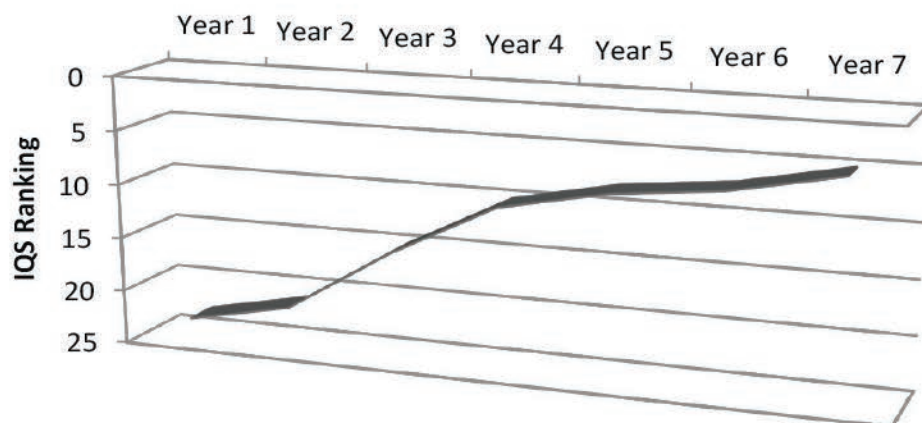
Fault codes describe the failure they represent, along with the code number corresponding to the failure, providing you with more in-depth information. PIDs, the ability to graph different functions, and live streaming data provide immediate access to information on how to complete the repair.

## QUALITY IMPROVEMENT.

Useful functions include cylinder balance tests, compression testing, misfire graphing and much more. You will put your customers back on the road with the assurance that their repair needs are met.

## Ford Quality Improvement

The same MAHLE engineers who designed TechPRO® provided factory end-of-line testing that was part of Ford's quality improvement success story.

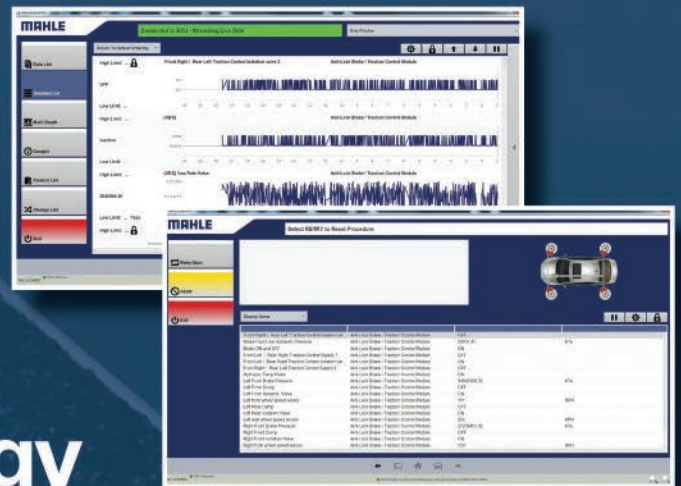


\*Source: JD Power "Initial Quality Survey"™ (Defects reported by US consumers within 90 days after vehicle purchase.)



# Innovation That's Easy

1. Download TechPRO® Software
2. Connect via Bluetooth or USB
3. Start Seeing Your Shop's Savings



## SMART Technology

- Tech-friendly menu. Easy-to-read menu options for seven categories: Diagnose; OBDII; Snapshot Replay; Settings/Manage VCI; Feedback; Activate Subscription; MAHLE Chat.
- Speed of VIN decode. 1 second average via USB. 3-4 seconds average via Bluetooth.
- Speed of diagnosis. Full vehicle DTC scan of all modules in an average of 20-30 seconds.
- Data. Real-time streaming live data with graphing and gauges.
- Snapshot Replay. Always-on data recording allows seamless data review, export, and import.
- Repair Maintenance Interface. Jump directly from DTC's found to free web information on the code or to repair information found on RMI subscriptions.
- Tech-friendly alerts. Bright LED lights provide feedback that VCI is connected and communicating properly. Audible alarm on VCI sounds when not in operation to help prevent drive-offs.
- SMART technical support. Free lifetime support via phone, email, or MAHLE chat button. MAHLE technical support can take control of the device remotely for troubleshooting and training.



# TechPRO® Automotive Diagnostic System

MAHLE's TechPRO® Diagnostic Scan Tool is the most advanced technology available for professional technicians. This versatile, software-based tool helps analyze, diagnose and repair today's sophisticated vehicles faster and more accurately than ever before.

Decades of providing diagnostics to OEM's end-of-line manufacturing test systems: now bringing this speed and stability to an aftermarket scan tool for the first time.



**Donny Seyfer:** Repair shop owner, industry educator and ASE Master Technician with 30+ years' experience

## Part Numbers

<b>402 80001 00</b>	Automotive Diagnostic System, includes VCI1000 and 1-year subscription
<b>402 80004 00</b>	402 80001 00 plus 8" tablet with preloaded software
<b>402 80006 00</b>	402 80001 00 plus 10" tablet with preloaded software
<b>402 80007 00</b>	402 80001 00 plus 12" Surface Pro tablet with preloaded software and ruggedized case

## MAHLE TechPRO® Automotive Diagnostic System Specifications and Minimum Requirements

VCI Certification	Meets SAE J1962
VCI FCC Codes	ID: X3ZBTMOD3 IC: 88228A-MOD3
VCI Dimensions (H x W x D)	4.56 x 1.96 x 1.06 in (116 x 50 x 27 mm)
VCI Weight	0.1 lbs. (0.045 kg)
VCI Warranty	2 Years
VCI Voltage	4 to 30 volts DC
VCI Power Consumption	Operating: ~100 mA @ 12 Volts DC
VCI Temperature Range	-40 degrees to 140 degrees Fahrenheit
VCI External Connectors	OBD II male connector (built-in, but user replaceable) and microUSB
VCI to PC Connection	USB 2.0 Full Speed; Bluetooth 3.0 Class 1 (100 m/325' range)
PC Operating System Requirements	Windows 7, 8, or 10

## Service and Support

Backed by the MAHLE name for superior quality, each VCI1000 and diagnostic software is crafted for maximum uptime and less maintenance. The TechPRO® series goes beyond standards; quality means failure-free assembly and satisfied end customers. Whether our customers want on-site technical assistance in making their business more efficient or just have a question regarding our products, we're here for them.