



Porto-Power®

BLACKHAWK AUTOMOTIVE™

Chapter Table of Contents

- 102-104 Body Repair Equipment Kits
 - 105 Flat Body Cylinder Kit
 - 105 Flat Body Cylinder
 - 106 Hydraulic Cylinders
 - 107 Threaded Cylinders
 - 107 Pull Cylinder
 - 108 Manual Foot Pump Combos
 - 109 Foot Pumps
 - 110 Manual Hand Pumps
 - 110 Air Hydraulic Hand Pump
 - 111 Hydraulic Spreaders
 - 111 Pull Posts and Accessories
 - 112 Hose Accessories
 - 113 Coupler Accessories
 - 113 Hooks and Chain Accessories

Porto-Power is the leading name in the automotive repair industry for body repair and hydraulic tools. Porto-Power's reputation is based on years of dependability, innovation and industry leading quality on a wide variety of body repair and frame straightening equipment.

This photo is for marketing purposes only and does not directly reflect on how products should be used. Please refer to your products Owners Manuals for suggested uses.

BODY REPAIR EQUIPMENT

4 Ton Body Repair Equipment Kit

| Letter | Model | Description |
|--------|--------|--------------------------|
| A | B65067 | 4 Ton Kit Blow-Mold Case |
| B | B65123 | 1000 lbs Spreader |
| C | B65151 | Serrated Saddle |
| D | B65152 | 90° V-Base |
| E | B65153 | Wedge Head |
| F | B65154 | Plunger Toe |
| G | B65155 | Ram Toe |
| H | B65156 | Flat Base |
| I | B65157 | 3" Extension Tube |
| J | B65158 | 6" Extension Tube |
| K | B65159 | 8.5" Extension Tube |
| L | B65161 | 19.5" Extension Tube |



| Letter | Model | Description |
|--------|--------|----------------------------|
| M | B65177 | Male Connector |
| N | B65178 | Rubber Head |
| O | B65186 | 4 Ton Manual Hyd Hand Pump |
| P | B65187 | 4 Ton Hyd Ram |
| Q | B65291 | 6 Feet Hose w/ Coupler |
| R | B69477 | ¼" Female Half Coupler |
| S | B69478 | ¼" Male Half Coupler |

| Model | Description | Capacity (Pump/Ram) | Ram (Closed H/Ext H/Area²) | Weight |
|--------|---------------------------------|---------------------|----------------------------|-----------|
| B65114 | 4 Ton Body Repair Equipment Kit | 8,000 PSI / 4 Ton | 11.00" / 15.75" / 0.99" | 41.00 lbs |

BODY REPAIR EQUIPMENT

10 Ton Body Repair Equipment Kit

| Letter | Model | Description |
|--------|--------|-----------------------------|
| A | B65068 | 10 Ton Kit Blow-Mold Case |
| B | B65123 | 1000 lbs Spreader |
| C | B65162 | 27" Extension Tube |
| D | B65163 | 18" Extension Tube |
| E | B65164 | 10" Extension Tube |
| F | B65165 | 4" Extension Tube |
| G | B65166 | Wedge Head |
| H | B65167 | Serrated Saddle |
| I | B65168 | Flat Base |
| J | B65169 | Ram Toe |
| K | B65172 | Plunger Toe |
| L | B65173 | 90° V-Base |
| M | B65179 | Male Connector |
| N | B65180 | Rubber Head |
| O | B65188 | 10 Ton Manual Hyd Hand Pump |
| P | B65189 | 10 Ton Hyd Ram |
| Q | B65291 | 6 Feet Hose w/ Coupler |
| R | B69477 | ¼" Female Half Coupler |
| S | B69478 | ¼" Male Half Coupler |



| Model | Description | Capacity (Pump/Ram) | Ram (Closed H/Ext H/Area²) | Weight |
|--------|----------------------------------|---------------------|----------------------------|-----------|
| B65115 | 10 Ton Body Repair Equipment Kit | 10,000 PSI / 10 Ton | 13.63" / 19.75" / 2.41" | 92.00 lbs |

BODY REPAIR EQUIPMENT

FLAT BODY CYLINDERS/KIT

20 Ton Body Repair Equipment Kit

| Letter | Model | Description |
|--------|--------|--------------------------|
| A | B65073 | Wooden Chest |
| B | B65421 | 2 Speed Manual Hand Pump |
| C | B65581 | Male Coupler, 3/8" NPT |
| D | B65582 | Female Coupler, 3/8" NPT |
| E | B65593 | 6 Feet Hose w/ Coupler |
| F | B65740 | 20 Ton Cylinder |
| G | B65760 | 3" Extension Tube |
| H | B65762 | 5" Extension Tube |
| I | B65764 | 10" Extension Tube |
| J | B65766 | 18" Extension Tube |
| K | B65768 | 30" Extension Tube |
| L | B65770 | Threaded Connector |
| M | B65771 | Serrated Saddle |
| N | B65772 | V-Head |
| O | B65773 | Wedge Head |
| P | B65774 | Ram Toe |
| Q | B65775 | Chain Pull Plate |
| R | B65776 | Threaded Coupling |
| S | B65778 | Ram Base |
| T | B65779 | Base Plunger |
| U | B97518 | 8 Feet Chain w/ Hook |



| Model | Description | Capacity (Pump/Ram) | Ram (Closed H/Ext H/Area²) | Weight |
|--------|----------------------------------|---------------------|----------------------------|------------|
| B65041 | 20 Ton Body Repair Equipment Kit | 10,000 PSI / 20 Ton | 11.77" / 16.93" / 5.14" | 193.00 lbs |

5 Ton Flat Body Cylinder Kit



4 Ton Flat Body Cylinder

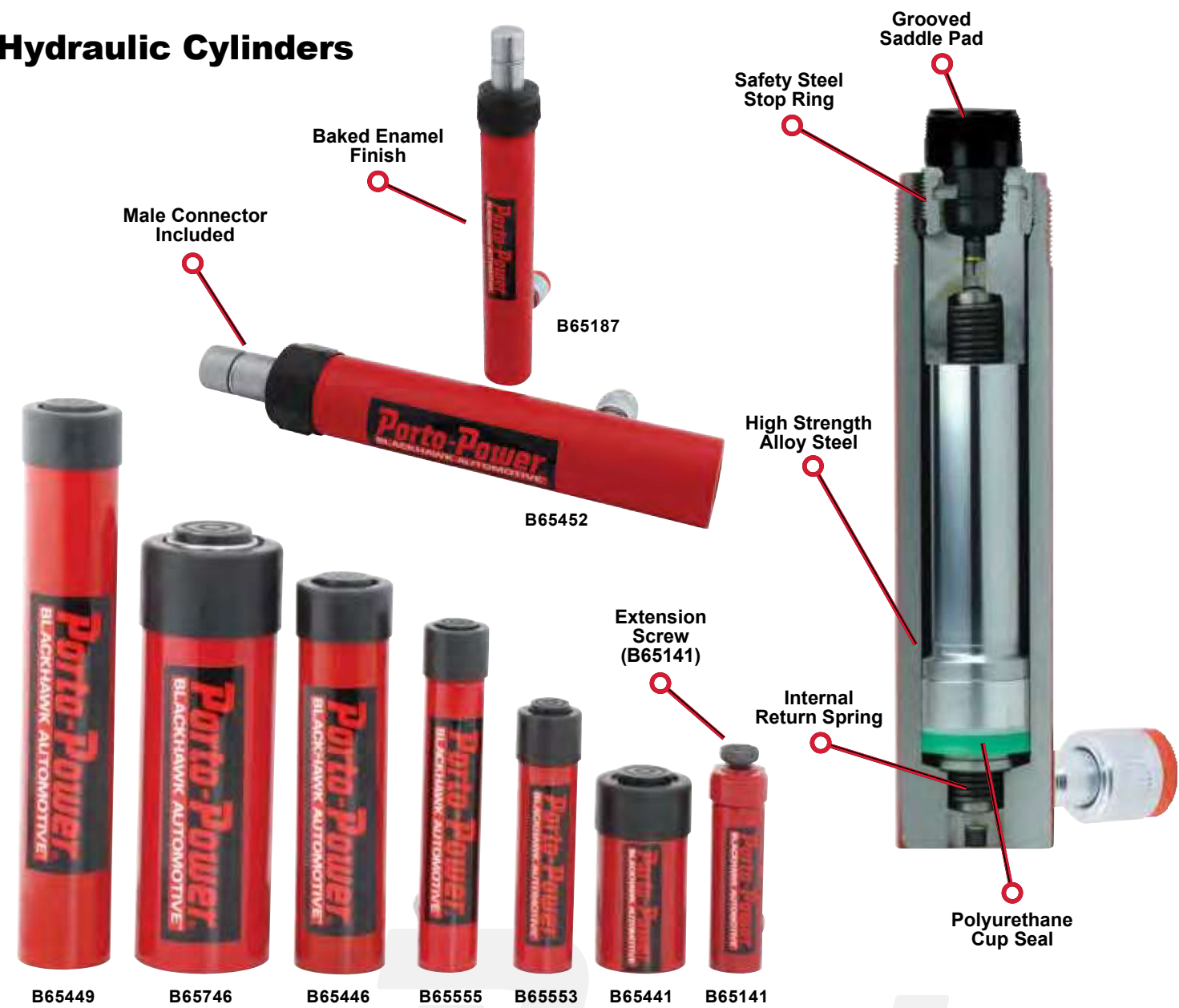


| Model | Description | Stroke | Height (Collapsed/Ext) | Pressure @ Capacity | Ram Plunger Dia | Mounting Hole Dia | Weight |
|---------|-------------------------|--------|------------------------|---------------------|-----------------|-------------------|----------|
| B65139* | 5 Ton Flat Body Ram Kit | 0.24" | 1.26" / 1.50" | 9,100 PSI | 0.98" | 0.20" | 6.00 lbs |
| B65140 | 4 Ton Flat Body Ram | 0.63" | 1.63" / 2.26" | 8,050 PSI | 0.98" | 0.20" | 2.02 lbs |

*Model B65139 comes with four magnetic adapters and a carrying case.

HYDRAULIC CYLINDERS

Hydraulic Cylinders



| Model | Cap | Stroke | Eff Area | Oil Capacity | Height (Coll/Ext) | Diameter (Out/Plun/Sad/Hole) | Op Pressure | Coupler | Weight |
|---------|--------|--------|---------------------|----------------------|-------------------|------------------------------|-------------|------------------|-----------------|
| B65141 | 2 Ton | 3.07" | 0.76in ² | 2.32in ³ | 5.39" 8.46" | 2.80" 0.96" 1.00" | - | 5,800 PSI | B69477 2.00 lbs |
| B65187* | 4 Ton | 4.75" | 1.00in ² | 4.74in ³ | 11.00" 15.75" | 1.50" 0.97" 0.97" 0.98" | 8,000 PSI | B69477 4.00 lbs | |
| B65441 | 10 Ton | 2.01" | 2.24in ² | 4.48in ³ | 4.84" 6.85" | 2.26" 1.49" 1.38" 0.28" | 10,000 PSI | B65582 6.00 lbs | |
| B65446 | 10 Ton | 5.94" | 2.24in ² | 13.44in ³ | 9.77" 15.88" | 2.26" 1.49" 1.38" 0.31" | 10,000 PSI | B65582 10.50 lbs | |
| B65449 | 10 Ton | 9.96" | 2.24in ² | 22.31in ³ | 13.86" 23.82" | 2.26" 1.49" 1.38" 0.31" | 10,000 PSI | B65582 15.00 lbs | |
| B65452* | 10 Ton | 6.03" | 2.24in ² | 13.44in ³ | 14.59" 20.62" | 2.26" 1.50" 1.38" 0.31" | 10,000 PSI | B65582 13.00 lbs | |
| B65553 | 5 Ton | 3.07" | 1.00in ² | 3.00in ³ | 6.65" 9.72" | 1.50" 1.00" 0.98" 0.20" | 10,000 PSI | B69477 4.00 lbs | |
| B65555 | 5 Ton | 5.08" | 1.00in ² | 5.00in ³ | 8.70" 13.78" | 1.50" 1.00" 0.98" 0.20" | 10,000 PSI | B69477 5.00 lbs | |
| B65746 | 25 Ton | 6.10" | 5.14in ² | 31.40in ³ | 10.71" 16.81" | 3.35" 2.24" 2.13" 0.40" | 10,000 PSI | B65582 24.00 lbs | |

* Both B65187 and B65452 come with a male connector for the use with extension tubes.

THREADED / PULL HYD CYLINDERS

Threaded Rams



| Model | Cap | Stroke | Eff Area | Oil Capacity | Height (Coll/Ext) | Diameter (Out/Plun) | Plun Out/ Base Int NPTF | Coupler | Optimum Pressure | Weight |
|--------|--------|--------|---------------------|----------------------|-------------------|---------------------|-------------------------|---------|------------------|-----------|
| B65142 | 4 Ton | 5.08" | 1.00in ² | 5.00in ³ | 10.12" 15.20" | 1.50" 1.00" | 3/4"-14 | B69477 | 8,000 PSI | 4.40 lbs |
| B65442 | 10 Ton | 6.10" | 2.24in ² | 13.66in ³ | 11.61" 17.72" | 2.27" 1.69" | 1-1/4"-11.5 | B65582 | 10,000 PSI | 11.00 lbs |
| B65444 | 10 Ton | 10.12" | 2.24in ² | 22.40in ³ | 15.63" 25.75" | 2.27" 1.50" | 1-1/4"-11.5 | B65582 | 8,930 PSI | 15.00 lbs |
| B65740 | 20 Ton | 5.16" | 5.14in ² | 26.48in ³ | 11.77" 16.93" | 3.35" 2.24" | 2"-11.5 | B65582 | 7,780 PSI | 22.00 lbs |

| Model | Cap | Stroke | Eff Area | Oil Capacity | Height (Coll/Ext) | Diameter (Out/Plun) | Ram Out/ Base Moun NPTF | Optimum Pressure | Weight |
|--------|-------|--------|---------------------|---------------------|-------------------|---------------------|-------------------------|------------------|-----------|
| B65454 | 5 Ton | 5.55" | 1.14in ² | 6.33in ³ | 11.93" 17.48" | 2.25" 1.18" | 1-1/4"-11.5 | 8,780 PSI | 10.00 lbs |

Porto-Power by Blackhawk Automotive

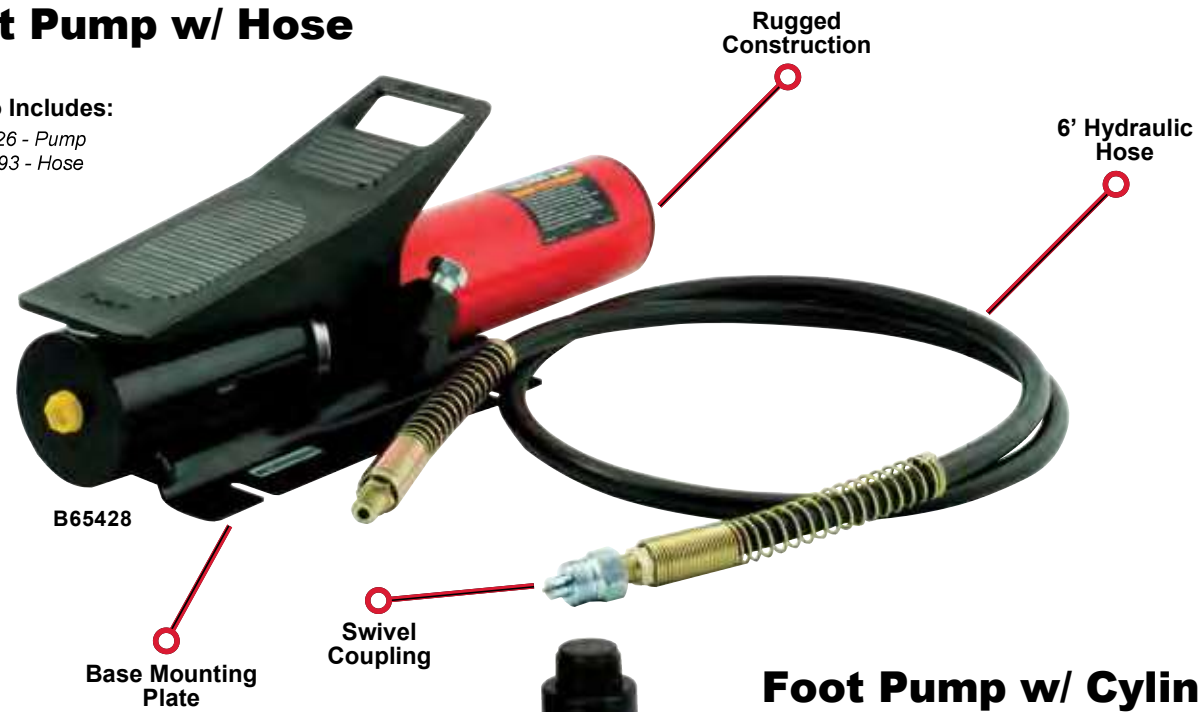
PUMP COMBO KITS

AIR HYDRAULIC FOOT PUMPS

Foot Pump w/ Hose

Combo Includes:

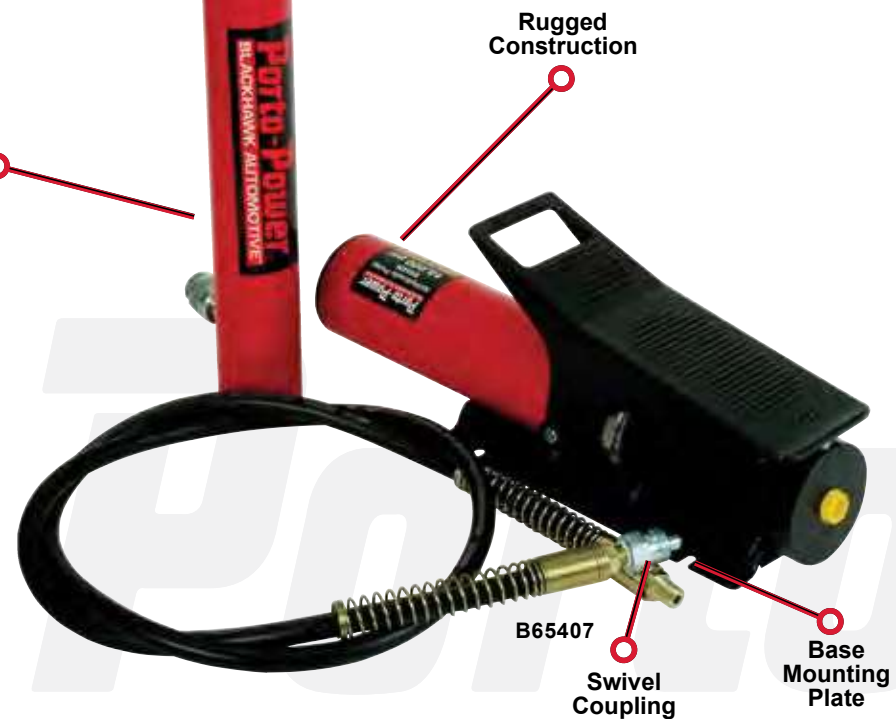
B65426 - Pump
B65593 - Hose



Foot Pump w/ Cylinder

Combo Includes:

B65426 - Pump
B65593 - Hose
B65444 - Ram



36 in³ Foot Pump



122 in³ Foot Pump



Patented Built In Bypass System
Pat. 5,946,912

91 in³ Foot Pump



231 in³ Foot Pump



| Model | Description | Cylinder # | Pump # | Hose # | Weight |
|--------|-----------------------------------|------------|--------|--------|-----------|
| B65407 | 10 Ton Cylinder / Foot Pump Combo | B65444 | B65426 | B65593 | 28.00 lbs |
| B65428 | Foot Pump with Hose Combo | - | B65426 | B65593 | 17.80 lbs |

| Model | Description | Oil Capacity | Rated Pressure | Output Flow Rate (in ³ /min.) (Load/No Load) | Input Air Pressure | Port Threads NPTF (Input/Output) | Weight |
|--------|-------------------------------|------------------------|----------------|---|--------------------|----------------------------------|-----------|
| B65425 | 91 in ³ Foot Pump | 91.50 in ³ | 10,000 PSI | 19.53 / 61.02 | 102-203 PSI | 1/4"-18 / 3/8"-18 | 18.50 lbs |
| B65426 | 36 in ³ Foot Pump | 36.60 in ³ | 10,000 PSI | 19.53 / 61.00 | 102-203 PSI | 1/4"-18 / 3/8"-18 | 16.50 lbs |
| B65427 | 122 in ³ Foot Pump | 122.00 in ³ | 10,000 PSI | 9.10 / 61.02 | 104-203 PSI | 1/4"-18 / 3/8"-18 | 21.10 lbs |
| B65438 | 231 in ³ Foot Pump | 231.00 in ³ | 10,000 PSI | 11.00 / 66.00 | 110-175 PSI | 1/4"-18 / 3/8"-18 | 25.00 lbs |

HYDRAULIC HAND PUMPS

Hydraulic Hand Pumps



Air Hydraulic Hand Pump



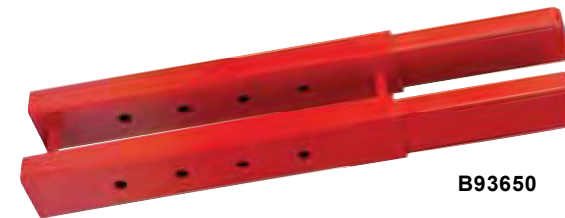
| Model | Description | Output Dis/Stroke (1st Stage/2nd Stage) | | Opt Force | Piston Stroke | Oil Outlet Port | Weight | |
|--------|---|---|---------------------|--|---------------|--------------------|----------------------------------|-----------|
| B65122 | 20 in ³ Manual Hyd Hand Pump | 0.18in ³ | 0.05in ³ | 88.00 lbs | 0.375" | 1/4"-18NPTF | 10.00 lbs | |
| B65421 | 60 in ³ Manual Hyd Hand Pump | 0.81in ³ | 0.14in ³ | 130.00 lbs | 0.815" | 3/8"-18NPTF | 16.00 lbs | |
| Model | Description | Oil Capacity | Rated Pressure | Output Flow Rate (In3/min.) (Load/No Load) | | Input Air Pressure | Port Threads NPTF (Input/Output) | Weight |
| B65424 | Air Hyd Hand Pump | 36.60in ³ | 10,000 PSI | 9.00 | 61.00 | 110-175 PSI | 1/4"-18 3/8"-18 | 16.50 lbs |

PULL POSTS & HYD SPREADERS

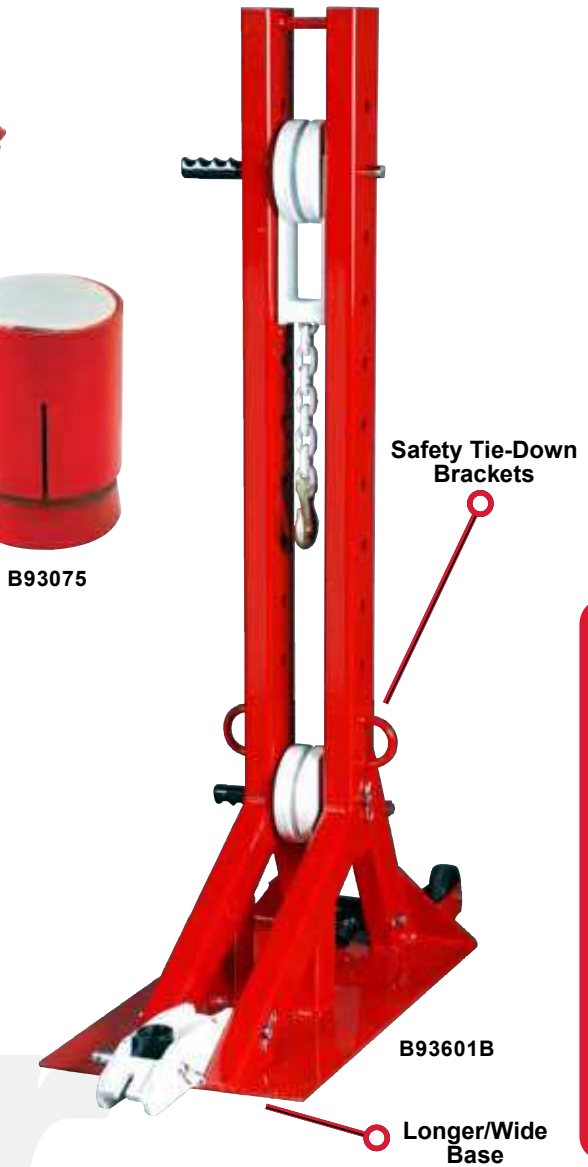
Hydraulic Spreaders



Pull Post Accessories



Pull Posts



| Model | Description | Size (L x W) | | Stroke | Weight |
|---------|--|---|-------|--------|------------|
| B65123 | ½ Ton Spreader w/ B69477 Coupler | 10.00" | 2.50" | - | 5.00 lbs |
| B65145 | 1 Ton Hydraulic Spreader w/ B69477 Coupler | 8.54" | 2.16" | 3.50" | 4.53 lbs |
| B93650 | Post Extension | For use with Pull Posts, such as (B93601B) | | | 32.00 lbs |
| B93075 | Anchor Pot With Chain | 3.13" | 3.13" | - | 6.00 lbs |
| B93601B | 10 Ton Pulling Post Package | Includes Pull Post, Chains, Pump, Hose, & Ram | | | 200.00 lbs |

Porto-Power by Blackhawk Automotive

ACCESSORIES

Hoses



B65290



B65291



B65594



B65590



B65591



B65593

| Model | Hose Length | Hose Size | Coupler | Connection | Weight |
|--------|-------------|-----------|---------------|------------|----------|
| B65290 | 6 Feet | 0.25" ID | - | 1/4" NPTF | 3.00 lbs |
| B65291 | 6 Feet | 0.25" ID | Male (B69478) | 1/4" NPTF | 2.00 lbs |
| B65594 | 6 Feet | 0.38" ID | - | 3/8" NPTF | 2.00 lbs |
| B65590 | 10 Feet | 0.38" ID | Male (B65581) | 3/8" NPTF | 4.00 lbs |
| B65591 | 10 Feet | 0.25" ID | Male (B69478) | 1/4" NPTF | 4.00 lbs |
| B65593 | 6 Feet | 0.38" ID | Male (B65581) | 3/8" NPTF | 3.00 lbs |

Reducer, Fitting, Bushing & Gauge



B65129



B65131



B65132



B65782

| Model | Description | Connection | Weight |
|--------|-----------------------------|------------|----------|
| B65129 | Reducer From 0.38" To 0.25" | - | 0.50 lbs |
| B65131 | Gauge Fitting | 0.25" NPTF | 0.60 lbs |
| B65132 | Bushing From 0.25" To 0.38" | - | 0.60 lbs |
| B65782 | 4.00" Wet Gauge | 0.25" NPTF | 1.55 lbs |

ACCESSORIES

Couplers



B65280



B65281



B65282



B65580



B65581



B65582

| Model | Type | Compatible Hose Size | Capacity | Weight |
|--------|----------------------|----------------------|----------|----------|
| B65280 | Complete Coupler Set | 0.25" ID | 4 Ton | 0.50 lbs |
| B65281 | Hose Half Coupler | 0.25" ID | 4 Ton | 1.00 lbs |
| B65282 | Ram Half Coupler | 0.25" ID | 4 Ton | 0.10 lbs |
| B65580 | Complete Coupler Set | 0.38" ID | 10 Ton | 0.60 lbs |
| B65581 | Hose Half Coupler | 0.38" ID | 10 Ton | 0.20 lbs |
| B65582 | Ram Half Coupler | 0.38" ID | 10 Ton | 0.40 lbs |

Hooks & Chains



B97661



B97662



B97691



B97518



B97520

| Model | Type | Length | Capacity | Weight |
|--------|-------------------------|--------|----------|-----------|
| B97520 | Double Grab Hook | - | 10 Ton | 3.00 lbs |
| B97661 | Chain With Claw Hook | 6 Feet | 10 Ton | 10.80 lbs |
| B97662 | Chain With 2 Claw Hooks | 6 Feet | 10 Ton | 12.00 lbs |
| B97691 | Chain With Claw Hook | 9 Feet | 10 Ton | 12.90 lbs |
| B97518 | Chain With Grab Hook | 8 Feet | 20 Ton | 23.00 lbs |